

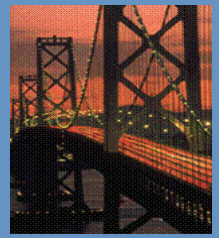
January 2009

Winter Issue

www.eri-va.com

Building Bridges...

for youth and young adults through education and employment training.



Calendar of Events

January 1-2

School/Offices Closed
New Years Holiday

January 19-20

School/Offices Closed
Martin Luther King Holiday
and Presidential Inauguration

January 26-27

School Early Dismissal

February 16

School/Offices Closed
Presidents' Day Holiday

March 23

School Early Dismissal

Employment Resources Incorporated

500 Lafayette Blvd., Suite 100, P.O. Box 801, Fredericksburg, VA 22404
540-372-6710 (office) - 540-373-1791 (fax)

New Faces in the Crowd at ERI and Oberle School



If you stop by Employment Resources Incorporated (ERI) and The Gladys H. Oberle School, located in Fredericksburg, you will "see some new faces," says Joan P. McLaughlin, ERI President. "Our staff has grown with the addition of several new talented teachers and administrative staff."

Mrs. McLaughlin and the late Gladys H. Oberle founded the organization and the alternative school in 1991 to offer a quality education to at-risk youth, and to provide employment and training services to young adults in the region.

In 2005, the school's name was changed to honor Mrs. Oberle, who died in 1996.

ERI's very successful Transition Program is one of its trademark services. The program helps to "build bridges" that begins with providing youth with a quality education and career readiness training. ERI's transition services helps students to "bridge the gap" to post-secondary education, training and employment.

Due to the growth of the Oberle School population, and the need for a marketing and development program, seven new staff members have joined ERI since September 2008.



Mike West, ERI's new Senior Vice President, joined the staff in December 2008. Mike has over 20 years of experience

as a senior marketing and development officer for national non-profit organizations. His main role at ERI will be to implement a marketing and development program to raise money for the organization.



Vicki McCarthy is the Oberle School's full-time Counselor. As a licensed clinical social worker,

continued on back...

Michael W. West, Editor
mwest@eri-va.com

The *Building Bridges* newsletter is produced quarterly by ERI to inform our clients, students, parents, community partners and the public about our educational, employment and transition programs and services. For more information call ERI offices at 540-372-6710, or visit our web site at:

www.eri-va.com

ERI Employee Celebrates 16 Years of Service



Joyce Corbin came to work at Employment Resources Incorporated on December 2, 1992, just shortly after the organization got started. Though ERI had been in operation for about a year, Mrs. Corbin's addition to the staff as the new clerk/typist, was well

received. Her signature smile, great attitude, and hard work are a daily staple in the ERI environment today. "Being involved with a company that truly cares about the direction of our youth was where I wanted to be," Corbin said.

In 1992, The Gladys H. Oberle School (then Star Center Alternative School) was

brand new and enrolling more students every year. As the years went by, Mrs. Corbin saw lots of changes and growth at ERI. Changes and growth that are still taking place today as the special education needs for children and employment services and training for young adults are

continued on back page...

New Faces in the Crowd *continued...*

Mrs. McCarthy brings a great deal of experience to the Gladys H. Oberle School. Prior to coming to ERI, Mrs. McCarthy worked with two high schools in Stafford County and her passion is working with adolescents and helping them with the many challenges they face each day.



Rosanna Finegan came to the Oberle School this year to teach English and Geometry. "I am blessed to have the opportunity to work at ERI," says Finegan. "I look forward to the personal growth I will get from it." Mrs. Finegan is also working on her Masters of Education degree at the University of Mary Washington. She will graduate with her Masters in May 2010.



Another new face at ERI is **Elizabeth Mark**, an Indiana native, who moved to the area in 2000.

For the past nine years she has been teaching community art classes for kids ages 5-10. At the Oberle School, she teaches social skills, language arts, social studies, science Art, Math and PE. She is currently working on her Master's degree at the University of Mary Washington's School of Graduate Studies.



Every teacher depends on the assistance of a good, qualified teacher's aid and that is no different at the Gladys H. Oberle School. When **Shawn McGowan** began work here as a first-year Teacher's Aid, he was welcomed with open arms. Mr. McGowan works

very well with the kids and they enjoy being around him. "Working at ERI has been an enjoyable experience. I love the people and the students," said McGowan.



A Stafford native, **Faranda Ferguson**, came to work for ERI this year as a Transition Specialist. She helps students hone their basic job and life skills as part of their transition training. Ms. Ferguson assists students in getting to and from their community based training sites. She has a Bachelors degree in History from the University of Mary Washington. Ms Ferguson is currently working to complete her Master's degree in Education at the UMW's School of Graduate Studies by December 2009.

We want to welcome all the new staff to our ERI family!

Oberle School Teacher receives Master's Degree



As a professional educator and 4th year teacher at The Gladys H. Oberle School, **Tricia St. Clair** has always set standards high for her students, and herself. In December 2008, Ms. St. Clair com-

pleted her Masters of Education degree at the University of Mary Washington's School of Graduate Studies. She teaches a plethora of classes including Biology, Earth Sciences, Anatomy & Physiology, Social Skills, and PE. Ms. St. Clair has taught Life

Skills English and Algebra 1 as well. She sponsors the school's recycling program and assists with the Senior Citizen visitation program. ERI is very proud of Ms. St. Clair and feels fortunate to have a teacher of her caliber on staff. *Congrats Ms. St. Clair!*

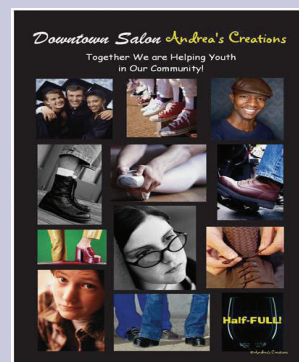
16 Years of Service *continued...*

in high demand. Today, Mrs. Corbin serves as ERI's Office Manager with a variety of responsibilities. "Every day here is a learning and growing experience. The people and the organization are great!"

said Corbin. All of us here at ERI want to extend our heart-felt appreciation and gratitude to Mrs. Corbin for her 16 years of extraordinary service to our organization. We look forward to our

next 16 years with Mrs. Corbin and we want her to know how much we appreciate all of her wonderful contributions over the years.

Congratulations Mrs. Corbin!



New Partnership to Raise Funds for Oberle School

In this economy, a youth's needs are bigger than state and federal grants will cover. Andrea's Creations is establishing a fund that will help pay for food, clothing, utilities and rent of a youth enrolled in one of ERI's programs to ensure that nothing stands in the way of his or her success.

Julie Ricketts has joined in this effort and is selling unique gifts by Andrea at Downtown Salon, her Paul Mitchell Focus Salon. Stop by 103 Amelia Street and purchase a gift to help support ERI's efforts to educate and train at-risk youth in our community.

If your company would like to partner with ERI, please contact Mike West at 540-372-6710.



ERI Headquarters and Fredericksburg campus of The Gladys H. Oberle School.

ERI's Mission

Employment Resources Incorporated's mission is to provide youth with the education and skills they need to become successfully employed, self-sufficient and contributing members of their community.